



Cost-effective and simple trapezoid sheet metal assembly

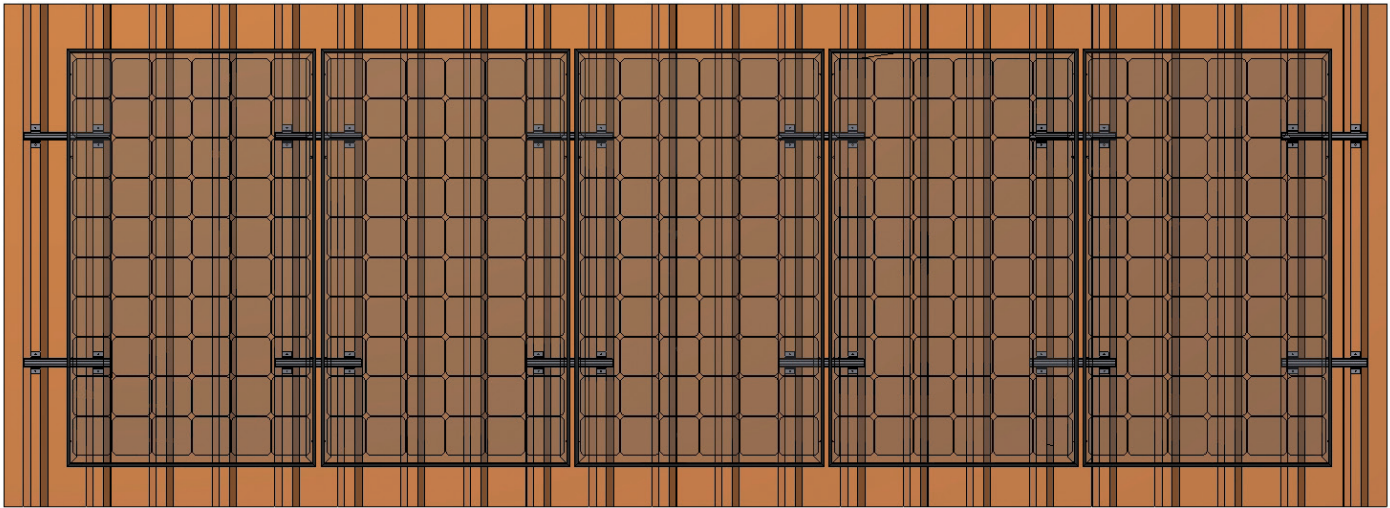
IBC TopFix 200

Eco trapezoid system

Pre-picked components and pre-assembled trapezoidal clamps make the IBC TopFix 200 Eco trapezoid mounting system a winner. This short rail system makes assembly easier and saves you time compared with conventional mounting systems. The IBC TopFix 200 Eco trapezoid system is suitable for almost any module type. Weatherproof components made from aluminium and stainless steel guarantee a long service life. Low material costs make the Eco trapezoid system particularly cost-effective. The IBC TopFix 200 has been tried and tested many a times and scores high marks with secure connections.

Highlights:

- Low system costs with modular system
- General building authority approval (in preparation)
- Consideration of thermal expansion of system profiles
- Easy to service due to quickly replaceable, individual components
- Long service life and weatherproof components
- Completely pre-assembled short rail system
- 10 year product guarantee*



Eco trapezoid system

- Fast and easy mounting thanks to time-saving riveting technology (no screws)
- Tried and tested middle clamp suitable for all module heights
- Precise and fast positioning using UV-resistant, high-performance adhesive tape
- Wide application range

- Applications:
 - Steel and aluminium trapezoidal steel roofs with a minimum sheet thickness of 0.5 mm
 - Minimum high-bead width 15 mm

Eco trapezoid system	340 mm	420 mm
Knuckle distance (mm)	207–250	260–333
Article number	6700200016	6700200017

2014-03-25

IMPORTANT!

Fastening of the roof cladding to the substructure must be ensured by the customer.

For the exact technical conditions and working methods, see the latest version of the installation instructions as well as the applicable standards and regulations.

Presented by:

* Product and power warranty in accordance with the version of the full warranty conditions received from your specialized IBC SOLAR partner at the time of installation. This warranty is valid only when the relevant product is installed in accordance with the applicable installation instructions. Subject to modifications that represent progress.